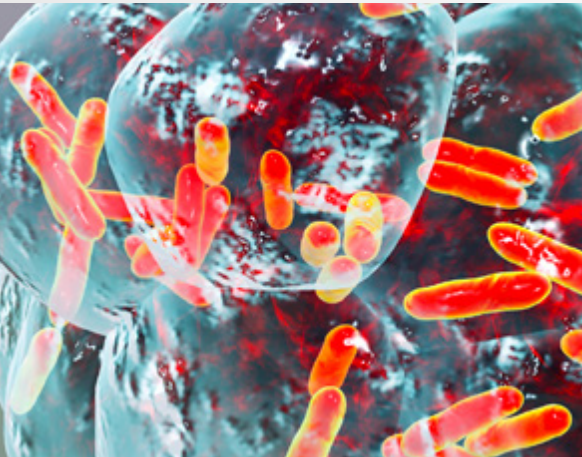




# GeneProof®

## GeneProof Bordetella pertussis/parapertussis PCR Kit



### MORE INFORMATION WITH LESS SAMPLES

- Detects and distinguishes *Bordetella pertussis* and *Bordetella parapertussis* in a single reaction tube

### EASY-TO-USE CONCEPT

- Single tube Ready-to-Use Master Mix contains all components for PCR amplification
- No additional PCR reagents pipetting necessary

### SIMPLE LABORATORY WORKFLOW

- Easily combinable with other GeneProof PCR kits in one workflow

### HIGHLY SPECIFIC DETECTION

- Amplification of the multi-copy insertion sequences IS1002 (specific for both *Bordetella pertussis/parapertussis*) and IS1001 (specific only for *B. parapertussis*)
- No false positive results for *Bordetella holmesii*

### CONTAMINATION PREVENTION

- Master Mix contains Uracil-DNA glycosylase (UNG) and dUTPs eliminating carryover contamination

#### ORDER INFORMATION

REF	PACKAGE
BP/ISEX/025	25 reactions
BP/ISEX/100	100 reactions



COMPATIBLE WITH A WIDE RANGE OF REAL-TIME PCR DEVICES



CERTIFIED DIAGNOSTIC TEST



# GeneProof Bordetella pertussis/ parapertussis PCR Kit

- + GeneProof Adenovirus PCR Kit
- + GeneProof Aspergillus PCR Kit
- + GeneProof Bordetella pertussis/  
parapertussis PCR Kit
- + GeneProof Enterovirus PCR Kit

- + GeneProof Chlamydia pneumoniae PCR Kit
- + GeneProof Flu Multiplex PCR Kit
- + GeneProof Legionella pneumophila PCR Kit

- + GeneProof Mycoplasma pneumoniae PCR Kit
- + GeneProof Mycobacterium tuberculosis PCR Kit

**GENEPROOF COVID-19 SOLUTION**

- + GeneProof SARS-CoV-2 PCR Kit

- + GeneProof SARS-CoV-2 Screening PCR Kit

- + GeneProof SARS-CoV-2 Advanced PCR Kit

INDICATION	<i>in vitro</i> diagnostic medical device
REGULATORY STATUS	CE IVD
INTENDED USER	For professional use in laboratories with trained staff
TECHNOLOGY	Real-time PCR
TYPE OF ANALYSIS	Qualitative
TARGET SEQUENCE	The multi-copy insertion sequences IS1002 (specific for both <i>Bordetella pertussis</i> / <i>parapertussis</i> ) and IS10001 (specific only for <i>B. parapertussis</i> )
ANALYTICAL SPECIFICITY	<i>B. pertussis</i> , 100% <i>B. parapertussis</i> , 100%
ANALYTICAL SENSITIVITY (LoD with 95% probability)	0.212 cp/μl (on Amplirun <sup>®</sup> Bordetella pertussis DNA control, Vircell)
EXTRACTION/INHIBITION CONTROL	PCR inhibition and DNA extraction efficiency control
VALIDATED SPECIMEN	<b>Aspirate, sputum, swab</b>
STORAGE	-20 ± 5 °C
VALIDATED EXTRACTION METHODS	croBEE 201A Nucleic Acid Extraction System GeneProof PathogenFree DNA Isolation Kit
INSTRUMENTS	croBEE Real-Time PCR System AriaMx Real-Time PCR System AMPLilab Real-Time PCR System Applied Biosystems 7500 Real-Time PCR System BioQuant-96 Real-Time PCR System CFX96™ / Dx Real-Time PCR Detection System Gentier 96E/96R Real-Time PCR System LightCycler <sup>®</sup> 480 LineGene 9600 / 9600 Plus Mic qPCR Cyclers QuantStudio™ 5 Real-Time PCR System Rotor-Gene 3000 / Q SLAN <sup>®</sup> Real-Time PCR System
DETECTION CHANNELS	FAM, HEX/JOE/VIC, Cy5
EXTERNAL QUALITY ASSESSMENT	Regularly tested in QCMD and Instand e.V. External Quality Assessment Panels - results at <a href="http://www.geneproof.com">www.geneproof.com</a>